

SINCE THE ESTABLISHMENT IN 2001, PT. VORTEX CONVEYOR INTERNATIONAL, HAVE INCREASINGLY GAINED CUSTOMER'S TRUST THROUGH QUALITY AND COMMERCIAL BENEFITS, BOTH FOR DOMESTIC AND EXPORT MARKETS, IN INDUSTRIES SUCH AS : MINING, BULK TERMINAL, POWER PLANT, CEMENT, PULP & PAPER AND FERTILIZER.

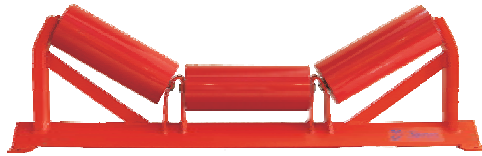
IMPLEMENTING ISO 9001:2000 FOR QUALITY MANAGEMENT, OUR TEAM STRIVE FOR EXCELLENT PRODUCT QUALITY AND CONTINUOUS DEVELOPMENT.

OUR PRODUCTS ARE DESIGNED TO COMPLY WITH UNIVERSAL STANDARDS : JIS, DIN, CEMA & ISO. WITH MAIN TARGET PROPERTIES : DYNAMIC BALANCE, LOW ROTATION RESISTANCE, AND DUST & WATER PROOF.

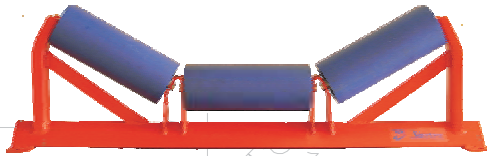
OUR MANAGEMENT TEAM IS COMMITTED TO WORK CLOSELY WITH OUR CUSTOMERS IN A WAY THAT RELIABLE PRODUCTS AND COST-EFFICIENCY ARE THE FINAL RESULTS.

**INDONESIAN PRODUCT
INTERNATIONAL QUALITY**

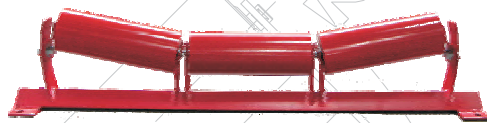




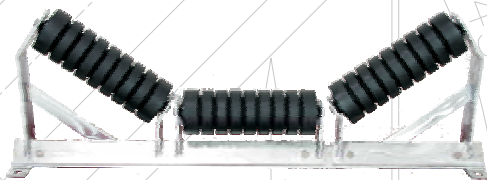
STEEL TROUGH CARRIER



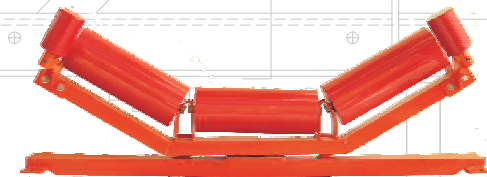
HDPE TROUGH CARRIER



TRANSITION TROUGH CARRIER



FIXED / RETRACTABLE IMPACT



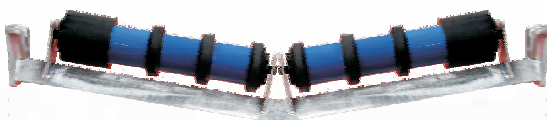
SELF ALIGNING CARRIER / RETURN



FLAT RETURN



RUBBER DISC RETURN



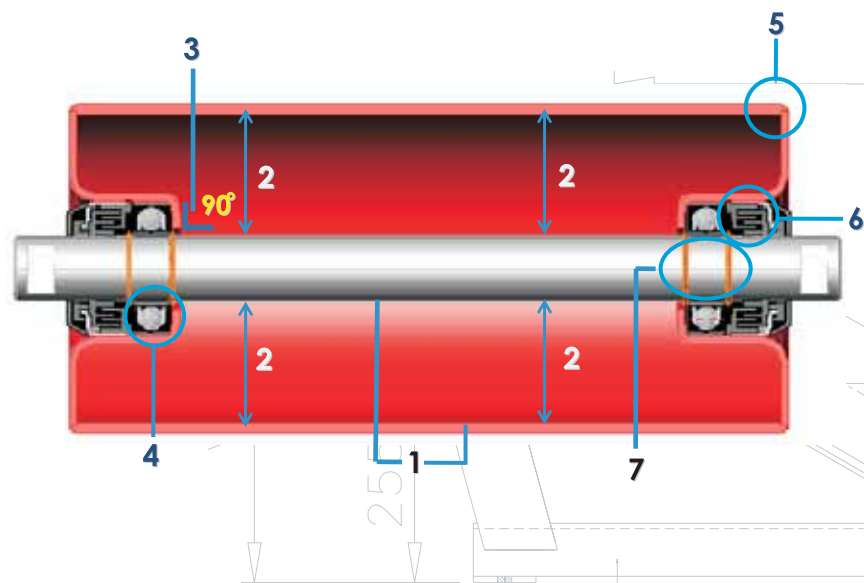
VEE-RETURN



SPIRAL RETURN

TARGET PROPERTIES :

1. DYNAMIC BALANCE
2. LOW ROTATION RESISTANCE
3. DUST AND WATER PROOF



LEGEND:

1. ROUND PIPE AND STRAIGHT SHAFT
2. PARALLEL AND SYMMETRICAL POSITIONING BETWEEN PIPE AND SHAFT
3. BEARING PERPENDICULAR (90°) WITH RESPECT TO SHAFT , AND ALIGNED
4. PROPER FITTING OF BEARING INTO BEARING HOUSING, SHAFT, CONSTRAINER
5. EVENLY WELDED THROUGH OUT SHELL'S RIM
6. DUST AND WATER PROOF SEAL CONFIGURATION
7. C-RING AND CIRCLIP TO AVOID BEARING MOVEMENT





SHELL ENDS ARE MACHINED TO PROVIDE STRAIGHTNESS AND INNER PROFILE FOR PROPER FIT WITH BEARING HOUSING



SEMI AUTOMATIC CONTINUOUS WELDING TO ENSURE UNIFORM STRENGTH TROUGH OUT SHELL'S RIM



SHAFT ARE PREPARED WITH TOLERANCE ACCORDING TO BEARING REQUIREMENT, AND MACHINED TO REMOVED SHARP EDGES WITH PRODUCTION CODE FOR EVERY BATCH

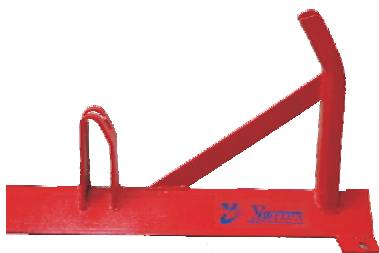
UNP 150x60x8



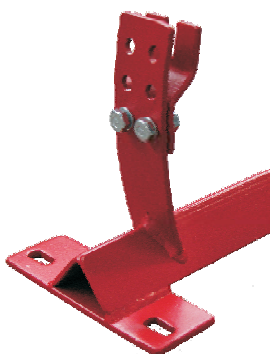
HYDRAULIC BEARING & SEALING COMPONENTS INSERTION



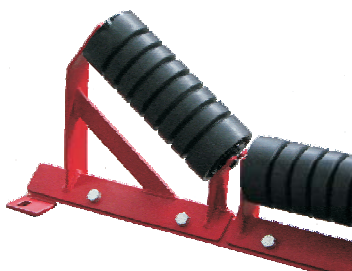


**FIXED TROUGH CARRIER**

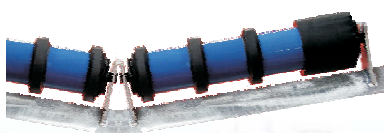
- **INLINE**
- **OFFSET**
- **PICKING**

**TRANSITION TROUGH CARRIER**

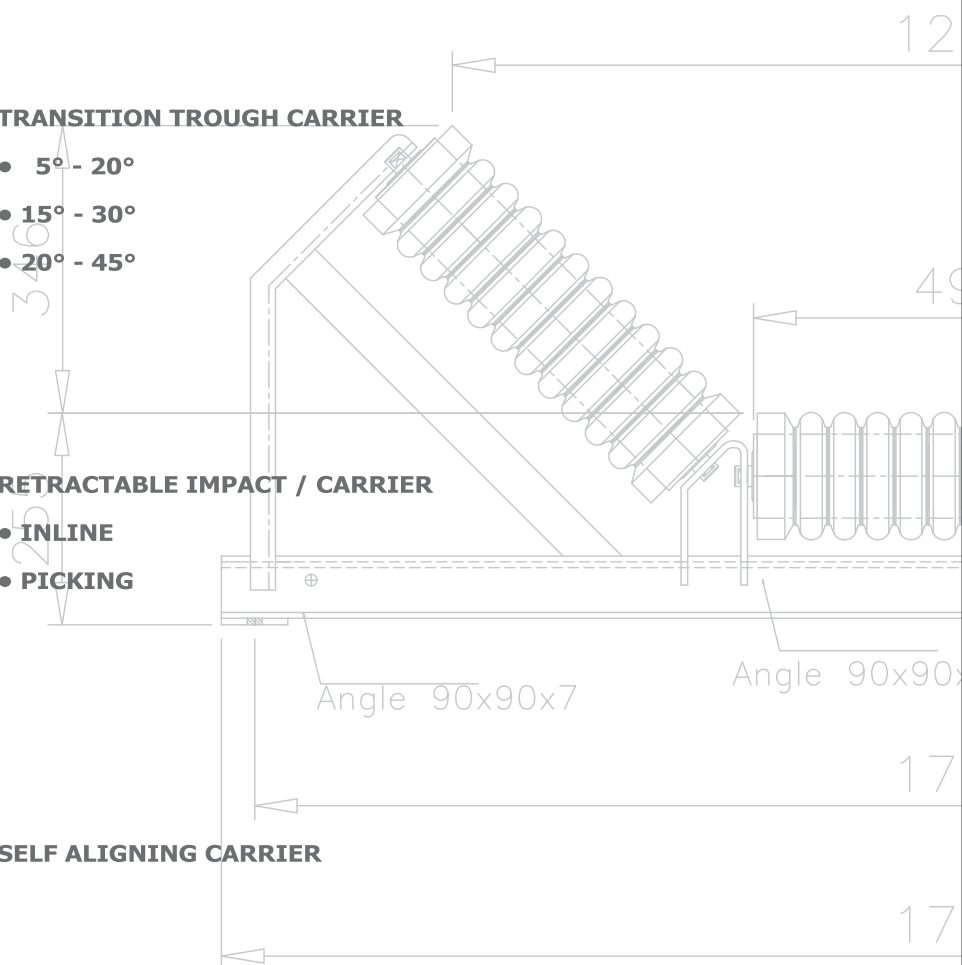
- **5° - 20°**
- **15° - 30°**
- **20° - 45°**

**RETRACTABLE IMPACT / CARRIER**

- **INLINE**
- **PICKING**

**SELF ALIGNING CARRIER****VEE-RETURN**

- **5°**
- **10°**





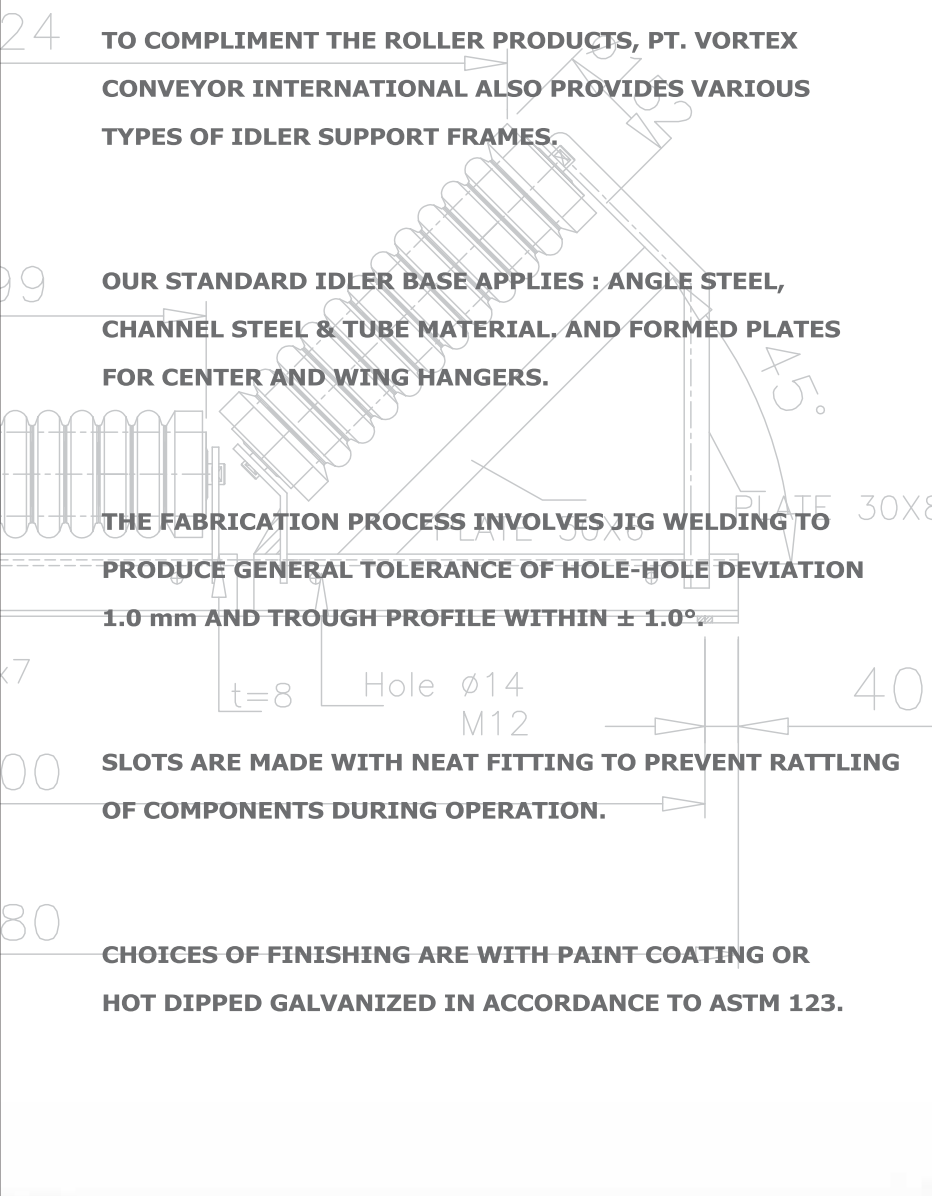
TO COMPLEMENT THE ROLLER PRODUCTS, PT. VORTEX CONVEYOR INTERNATIONAL ALSO PROVIDES VARIOUS TYPES OF IDLER SUPPORT FRAMES.

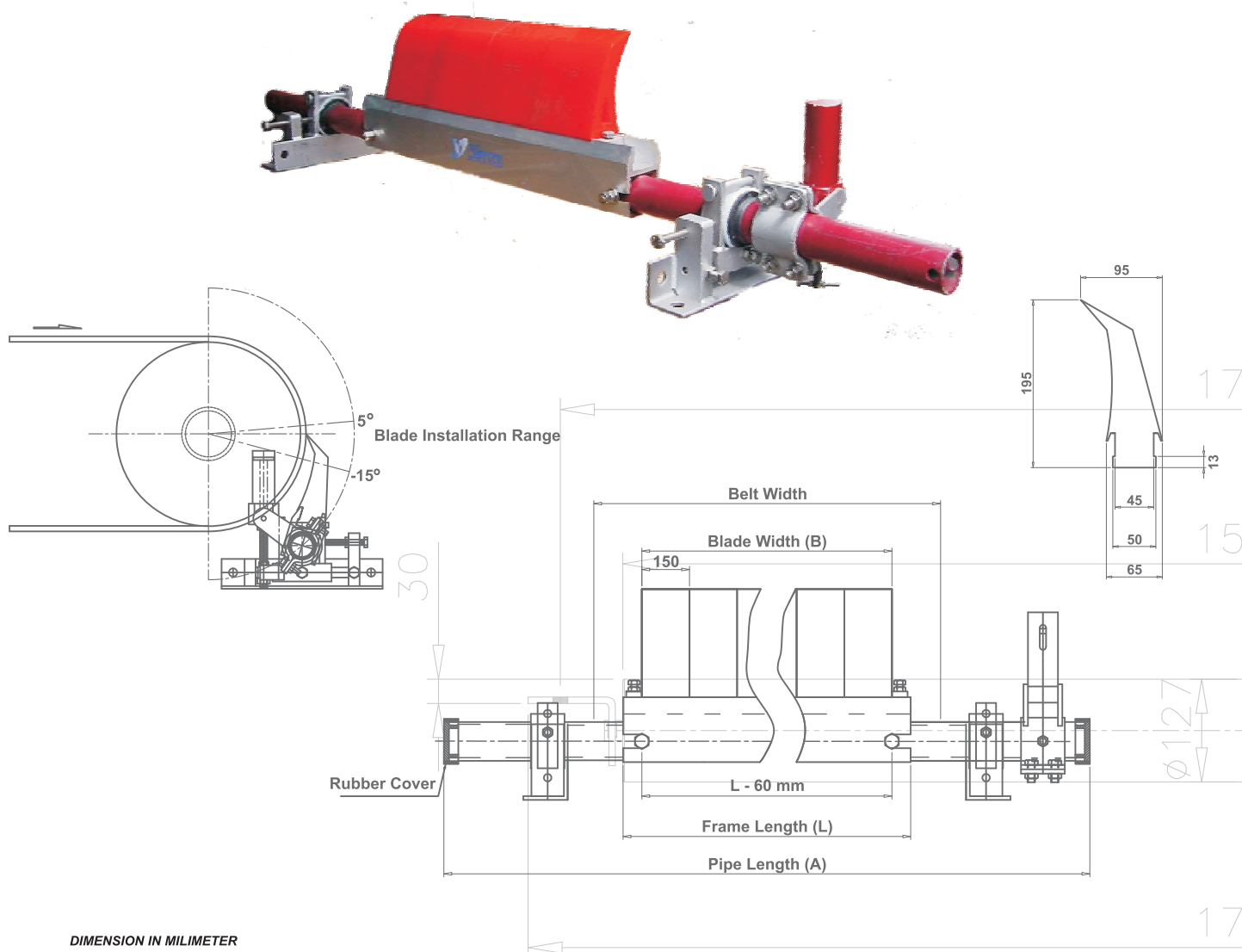
OUR STANDARD IDLER BASE APPLIES : ANGLE STEEL, CHANNEL STEEL & TUBE MATERIAL, AND FORMED PLATES FOR CENTER AND WING HANGERS.

THE FABRICATION PROCESS INVOLVES JIG WELDING TO PRODUCE GENERAL TOLERANCE OF HOLE-HOLE DEVIATION 1.0 mm AND TROUGH PROFILE WITHIN $\pm 1.0^\circ$.

SLOTS ARE MADE WITH NEAT FITTING TO PREVENT RATTLING OF COMPONENTS DURING OPERATION.

CHOICES OF FINISHING ARE WITH PAINT COATING OR HOT DIPPED GALVANIZED IN ACCORDANCE TO ASTM 123.



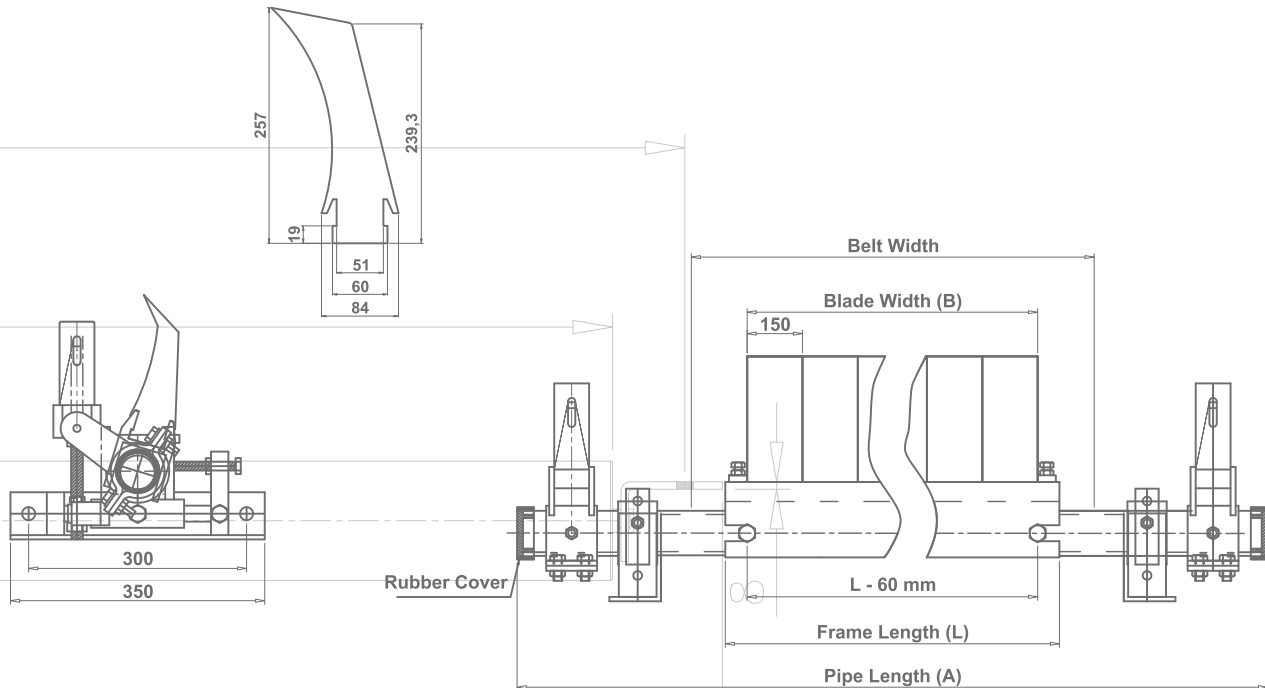


DIMENSION IN MILIMETER

Model No.	Belt Width	B (Blade)	L	A (Pipe Length)	Blade (N)
VPC1 - 045	450	300	380	1400	2
VPC1 - 050	500	450	530	1500	3
VPC1 - 060	600	450	530	1650	3
VPC1 - 065	650	450	530	1750	3
VPC1 - 075	750	600	680	1800	4
VPC1 - 080	800	600	680	1900	4
VPC1 - 090	900	750	830	1950	5
VPC1 - 100	1000	900	980	2100	6
VPC1 - 105	1050	900	980	2150	6
VPC1 - 120	1200	1050	1130	2250	7

Primary Belt Cleaner BW 1400-2600 mm

10



DIMENSION IN MILIMETER

Model No.	Belt Width	B (Blade)	L	A (Pipe Length)	Blade (N)
VPC1 - 140	1400	1200	1280	2450	8
VPC1 - 150	1500	1350	1430	2600	9
VPC1 - 160	1600	1350	1430	2600	9
VPC1 - 180	1800	1500	1580	2750	10
VPC1 - 200	2000	1650	1730	2950	11
VPC1 - 220	2200	1800	1880	3150	12
VPC1 - 240	2400	2100	2180	3500	14
VPC1 - 260	2600	2250	2330	3700	15



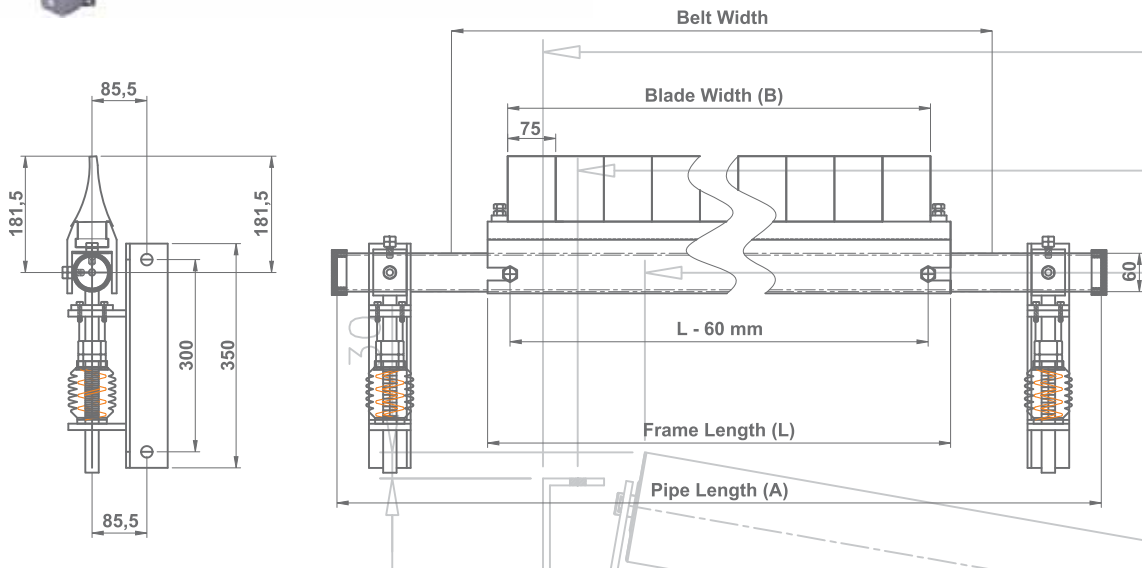
Secondary Belt Cleaner BW 450-2600 mm



PU BLADE



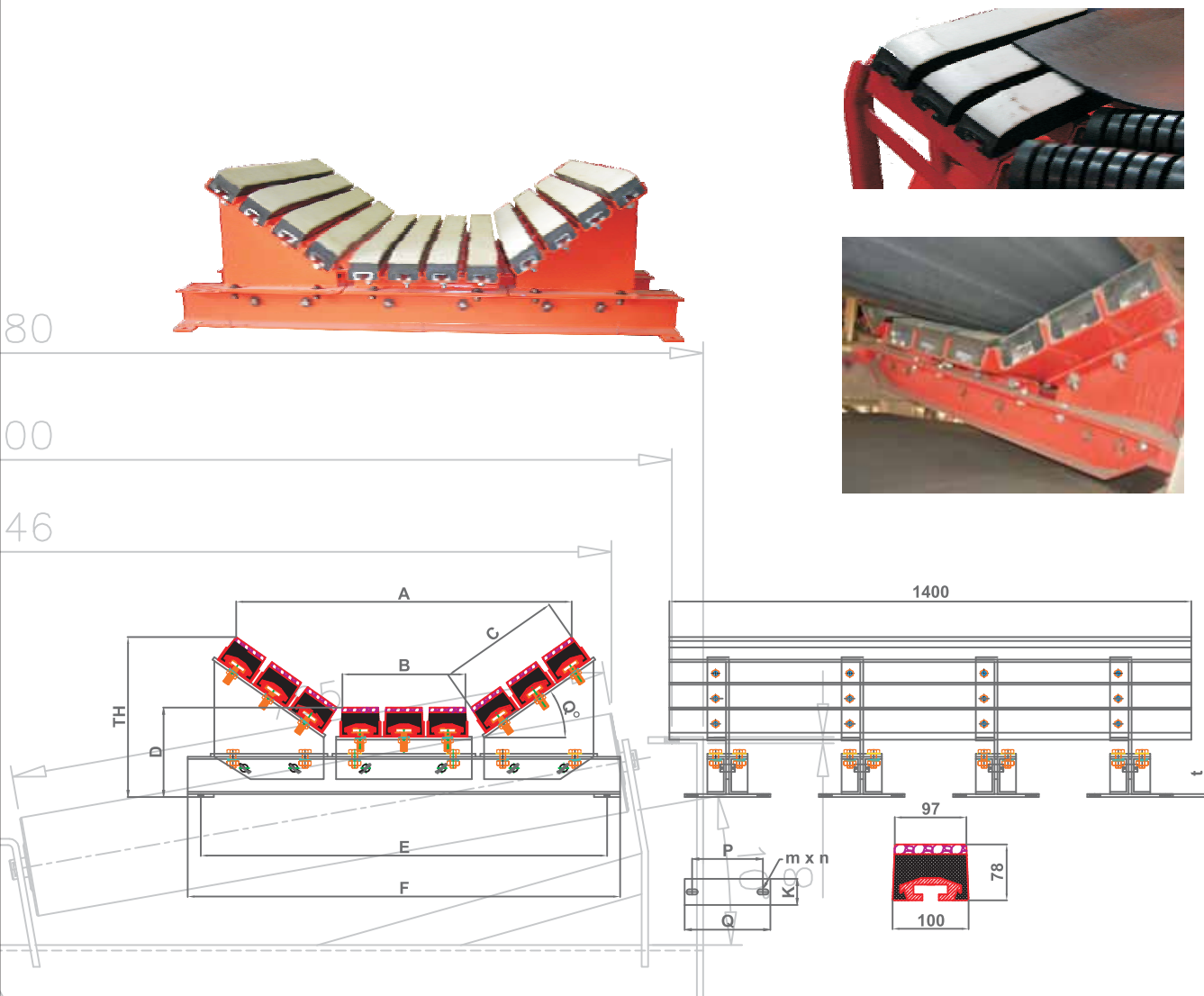
TUNGSTEN CARBIDE BLADE



Model No.	Belt Width	B (Blade)	L	A (Pipe Length)	TIP Q'ty (N)
VSC2 - 045	450	381	461	1500	5
VSC2 - 050	500	457	537	1550	6
VSC2 - 060	600	533	613	1650	7
VSC2 - 065	650	610	690	1750	8
VSC2 - 075	750	686	766	1800	9
VSC2 - 080	800	762	842	1900	10
VSC2 - 090	900	838	918	1950	11
VSC2 - 100	1000	915	995	2100	12
VSC2 - 105	1050	991	1071	2150	13
VSC2 - 120	1200	1143	1223	2250	15
VSC2 - 140	1400	1295	1375	2450	17
VSC2 - 150	1500	1448	1528	2600	19
VSC2 - 160	1600	1524	1604	2750	20
VSC2 - 180	1800	1753	1833	2950	23
VSC2 - 200	2000	1905	1985	3150	25
VSC2 - 220	2200	2128	2188	3334	28
VSC2 - 240	2400	2356	2416	3562	31
VSC2 - 260	2600	2432	2493	3639	32

DIMENSION IN MILIMETER



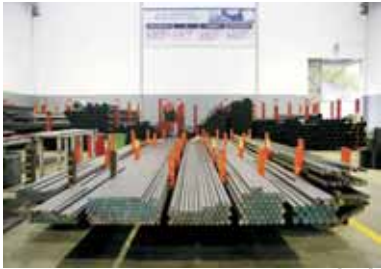


IMPACT BED

BELT WIDTH	MODEL NO	Θ								FRAME SIZE									
		20°		30°		35°		45°		F	E	B	C	D	K	t	P	Q	m x n
		A	TH	A	TH	A	TH	A	TH										
600	VIB-060	663	252	621	286					890	840	225	228	175	50	6	200	150	14 x 30
750	VIB-075	813	292	759	334	730	354	657	389	1090	1040	276	228	198	50	6	210	160	14 x 30
900	VIB-090	957	309	895	359	862	383	778	424	1240	1190	327	279	198	50	6	210	160	14 x 30
1050	VIB-105	1113	371	1040	429	1008	457	908	505	1390	1340	377	330	240	60	6	230	180	14 x 30
1200	VIB-120	1257	388	1176	454	1140	486	1029	540	1540	1490	428	381	240	65	6	230	180	14 x 30
1400	VIB-140	1478	497	1382	575	1344	613	1224	680	1790	1730	479	431	323	65	8	350	280	18 x 30
1600	VIB-160	1709	524	1801	615	1555	659	1417	736	1990	1930	581	533	323	70	8	350	280	18 x 30
1800	VIB-180	1910	578	1792	680	1735	729	1592	817	2280	2220	631	584	353	80	12	400	330	18 x 30
2000	VIB-200	2124	606	2010	720	1946	828	1785	874	2480	2420	740	700	353	100	12	400	330	18 x 30

DIMENSION IN MILIMETER





**FOR PARTICIPATION IN PROJECT EXECUTION,
AS PART OF PROJECT MANAGEMENT, OUR
DELIVERIES WILL BE ACCOMPANIED BY**

**MANUFACTURING DATA REPORT (MDR)
WHICH INCLUDES BUT NOT LIMITED TO :**

- INSPECTION TEST & PLAN (ITP)
- MATERIAL MILL CERTIFICATES
- DESIGN CALCULATION / ANALYSIS
- WELDING PROCEDURE (WPS/PQR)
- AS BUILT DRAWING
- PRODUCT TEST REPORT
- OPERATION & MAINTENANCE MANUAL
- FINAL INSPECTION RECORD





Mining



Power Plant



Pulp & Paper



Coal Terminal



Fertilizer



Cement



Steel Mill



Concrete / Quarry

99

14

44





Vortex Equipment Pty Ltd

21 Aristoc Road (PO Box 47)
Glen Waverly, VIC 3150
Australia
Tel : +61 - 3 - 9550 1821
Fax : +61 - 3 - 9560 3008
email : sales@vortex-eq.com.au
www.vortex-eq.com.au

PT. Vortex Conveyor International

Jl. Kruing 2 Block L-9 No.8
Delta Silicon Industrial Park - Lippo Cikarang
Indonesia - 17550
www.vortex.co.id